



# SPZ-FAMILY

FLATBED SEMI-TRAILERS



MADE FOR YOUR MISSION

# TOO LONG DOES NOT EXIST FLATBED SEMI-TRAILERS

---

Transporting heavy-duty and longer goods – irrespective of whether the load is crane ballast, crane jibs, trusses or components for wind energy plants, our flatbed semi-trailers are varied and suitable for anything. Equipped with up to five extension stages and a loading length of well over 70 m, our flatbed semi-trailer can adapt perfectly to any load. This provides you with the greatest possible flexibility in your operation planning and enables you to react appropriately to any challenge.



## PREPARED FOR EVERYTHING

06

With a loading deck length of over 55 m, Goldhofer is well prepared for any transportation task. Optionally available with hydraulic axle suspension, our flatbed semi-trailers with air suspension are designed for transporting extreme long loads over the road. Even if it gets tight, these trailers are convincing with their excellent maneuverability. These trailers are available with a offset gooseneck for an ever lower loading deck height and they give you an optimal utilization of your tractor fleet.



## FOR EXTREME APPLICATIONS

08

When longer loads have to go offroad, a conventional flatbed semi-trailer is often out of its depth, – not the case with our pendular axle vehicles. With an axle stroke of 600 mm and a steering angle of 60°, even the narrowest passages and difficult obstacles are no longer a challenge.



## WELL OVER 70 METERS?

10

Today's loads are getting longer and heavier. The wind power industry, in particular, is developing ever longer rotor blades which continue to push vehicles to their limits – but not with the »VENTUM«. Equipped with five extension stages and the capability to take on loads of well over 70 m, they are well prepared for the future.



# MOVING LONGER LOADS AND STILL REMAINING MANEUVERABLE

---

Our flatbed semi-trailers impress with maneuverability in action – no matter how long the load is and what challenges await you on the route. Irrespective of whether concrete beams or steel girders, boilers or wind blades, you can always rely on our vehicles.



## MASSES OF WIND BLADES

---

A total of 51 wind blades, with a length of up to 65 m, were successfully transported by several vehicles of Type SPZ-GL on the Rio Negro in Argentina from a cargo ship via a very small pier to an intermediate storage facility.

MORE ABOUT  
THE TYPE  
SPZ-GL

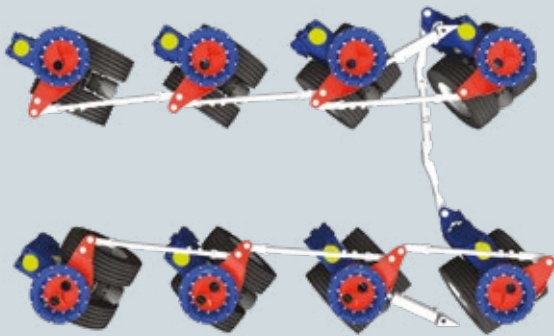
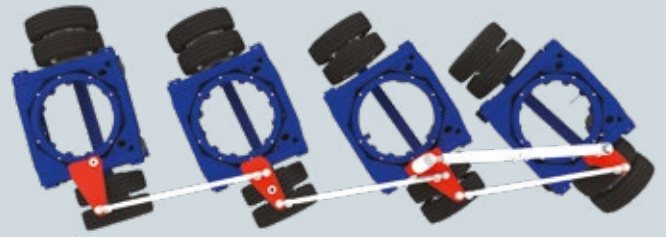
PAGE  
06



## TURNTABLE

---

Our flatbed semi-trailer with turntable impresses with its robust steering system: The hydraulic dual-circuit steering system ensures that safe operation is maintained even when one steering circuit fails. With a steering angle of  $48^\circ$  and axle stroke of up to 300 mm, even narrow spots can be handled effortlessly.



## PENDULAR AXLE STEERING

---

If the highest possible performance is required, then the pendular axle takes up the challenge: With a maximum steering angle of  $60^\circ$  and an axle stroke of 600 mm, these flatbed semi-trailers are extremely flexible even when transport has to travel along offroad routes.



## LONG LOADS OF ANY KIND

---

Not only in the field of wind energy, but also in other areas where long loads pose a challenge in daily transport, our flatbed semi-trailers are always ready for the task at hand. If flexibility and high robustness are what is required, then you can always rely on us.



# SPZ-L | SPZ-H SPZ-GL PREPARED FOR EVERYTHING

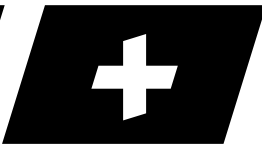
---



**PRACTICAL  
LASHING  
CONCEPT**



**COST EFFECTIVE  
TRANSPORT  
SOLUTION**



**COMPREHENSIVE  
ACCESSORIES**





**YOUR BENEFITS**

- ✓ Up to 3 extension stages
- ✓ Various loading heights
- » Optimized loading area for every utilization



**TECHNICAL FEATURES**

- + Axle load  
*(depending on country-related regulations)*  
*(technical)* 10 t at 80 km/h  
12 t at 80 km/h
- + Loading height 1,280-1,680 mm
- + Axle compensation 200 mm/270 mm/300 mm
- + Tires <sup>[1]</sup> 245/70 R 17,5
- + Vehicle width 2,480 mm/2,550 mm
- + Axle spacing 1,810 mm

Gooseneck	Chassis
<ul style="list-style-type: none"> <li>+ Fifth wheel load 20-32 t</li> <li>+ Swing clearance radius 2,400/2,800 mm</li> </ul>	<ul style="list-style-type: none"> <li>+ Single to triple telescopic</li> <li>+ Number of axles 2-7</li> <li>+ Axle compensation: SPZ-L   SPZ-GL: 200/270 mm SPZ-H: 300 mm</li> </ul>

**MAXIMUM FLEXIBILITY**

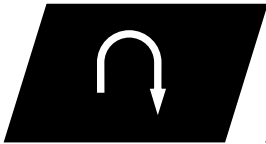
Our flatbed semi-trailer always demonstrates its complete performance capability, not just when transporting wind energy components.



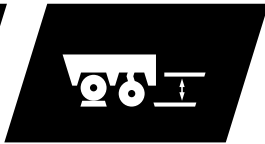


# SPZ-GP FOR EXTREME APPLICATIONS

---



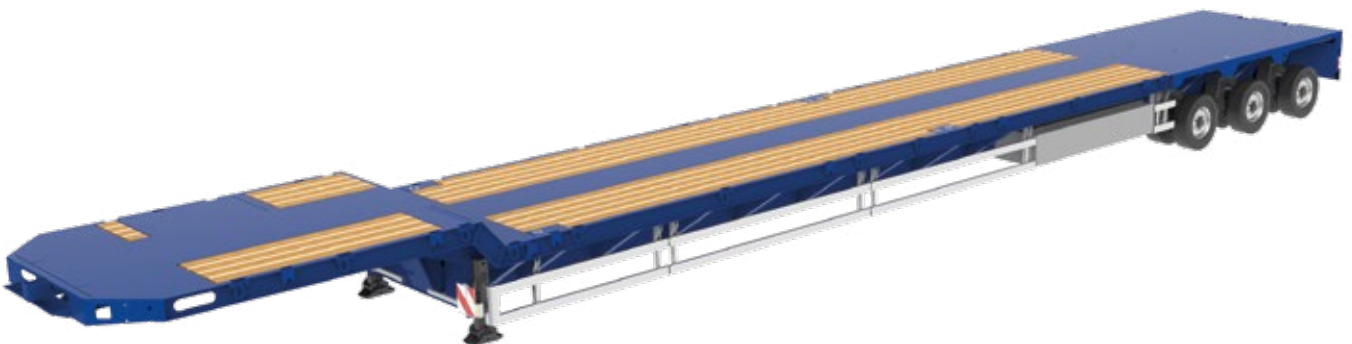
HIGH  
MANEUVERABILITY



HIGH  
AXLE STROKE



COMPREHENSIVE  
ACCESSORIES







**YOUR BENEFITS**

- ✓ Sophisticated accessories for wind blades
- » Gentle wind blade transport solution
- ✓ Rail system for shortening the loading area in loaded condition
- » Simplified driving through tight positions
- ✓ Axle stroke of 600 mm
- ✓ Steering angle up to 60°
- » All-in-one solution for road transport and offroad transport



**TECHNICAL FEATURES**

- + Axle load  
*(depending on country-related regulations)* 12 t at 80 km/h
- + Loading height 1,180 mm
- + Axle compensation 600 mm
- + Tires 245/70 R 17,5
- + Vehicle width 2,550 mm
- + Axle spacing 1,510 mm

Gooseneck	Loading area
<ul style="list-style-type: none"> <li>+ Fifth wheel load 26 t</li> <li>+ Swing clearance radius 2,400 mm/2,800 mm</li> </ul>	<ul style="list-style-type: none"> <li>+ Extendability 3-fold</li> <li>+ Number of axles 3</li> </ul>

**EFFICIENT**

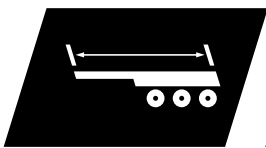
The large axle compensation of 600 mm is a particular advantage for offroad area applications.





»**VENTUM**«  
 WELL OVER 70 METERS?  
 NO PROBLEM HERE!

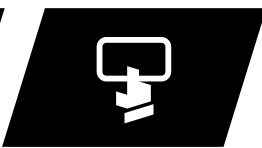
**VENTUM**



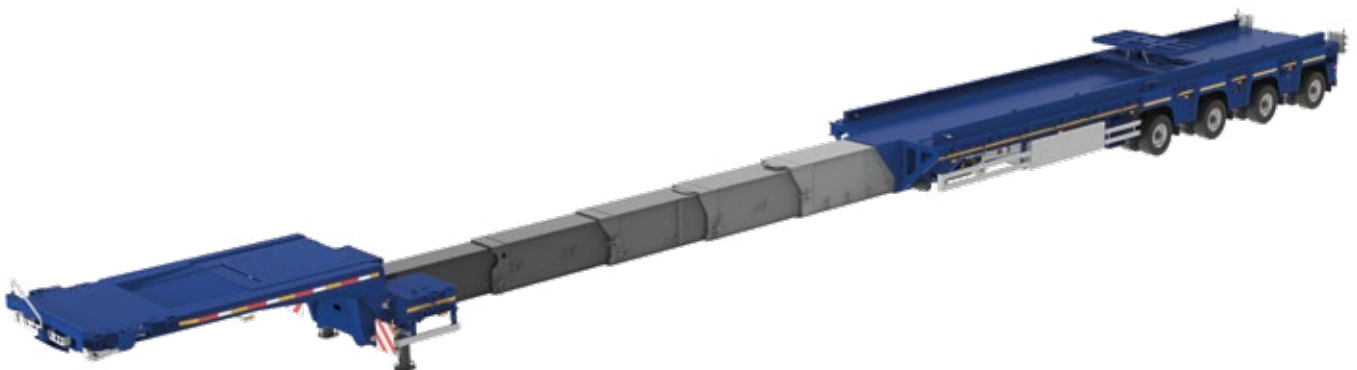
**NO CO-DRIVER  
 REQUIRED WHEN  
 DRIVING EMPTY**



**SIMPLIFIED  
 PASSAGE THROUGH  
 TIGHT POSITIONS**



**SIMPLE OPERATION  
 WITH  
 »SMARTCONTROL«**





**YOUR BENEFITS**

- ✓ 5-times extendable
- ✓ Suitable for 5-axle tractor unit
- » Ready for transporting the longest wind blades
  
- ✓ Enormous lift in gooseneck and in the chassis
- » Simplified passage through tight positions such as tunnels or roundabouts without any conversion work
  
- ✓ Adjustable steering
- » No co-driver required when driving as empty



**TECHNICAL FEATURES**

- + Axle load  
*(depending on country-related regulations)*  
*(technical)* 12 t at 80 km/h
- + Loading height 1,240 mm
- + Axle compensation 600 mm
- + Tires 245/70 R 17,5
- + Vehicle width 2,750 mm
- + Axle spacing 1,810 mm

Gooseneck	Telescopic tubes	Loading area
+ Fifth wheel load 33,5 t + Swing clearance radius 3,400 mm	+ 5-times extendable	+ Number of axles 3-4

**SIMPLE OPERATION**

The standard equipment with Goldhofer »Smart-Control« enables the operation of many functions of a semi-trailer vehicle at the push of a button, from starting up the traction unit to the electronic tracking aid and up to, and including, saving and adjustment of different driving heights.



All »SmartControl« functions can also be actuated by using the operating panels on the gooseneck and chassis.



# BLADEX



**EVEN BETTER WITH »BLADEX«**

The intelligent »BLADEX« scissors lift system is a high-performance supplement for our pendular axle flatbed semi-trailer. Complex and expensive detours or route adjustments are now a thing of the past due to the rail-mounted system: Even tight curves and obstacles are not a challenge anymore for »BLADEX«. The scissors lift system, with a lift of 10 m, also sets new benchmarks with regards to flexibility: The length of the flatbed semi-trailer can be reduced when loaded, which enables it to ideally react to any situation and therefore relieves the load on the blade.

# SPZ-FAMILY

## ACCESSORIES AND OPTIONS

---



---

<b>GENERAL ACCESSORIES</b>	<ul style="list-style-type: none"><li>+ Knorr "TIM"/Wabco "Smartboard"</li><li>+ Radio remote control</li><li>+ Storage boxes under the loading platform</li><li>+ Working lights</li><li>+ Lift axle</li><li>+ Dieselhydraulic power pack</li></ul>
<b>GOOSENECK</b>	<ul style="list-style-type: none"><li>+ Spare wheel carrier</li><li>+ High front wall</li><li>+ Toolbox</li></ul>
<b>LOADING AREA</b>	<ul style="list-style-type: none"><li>+ Stake pocket strip</li><li>+ Threaded bushes</li><li>+ Load-securing trestle</li><li>+ Twist locks</li><li>+ Rail system including sliding table</li><li>+ »BLADEX«</li></ul>

---

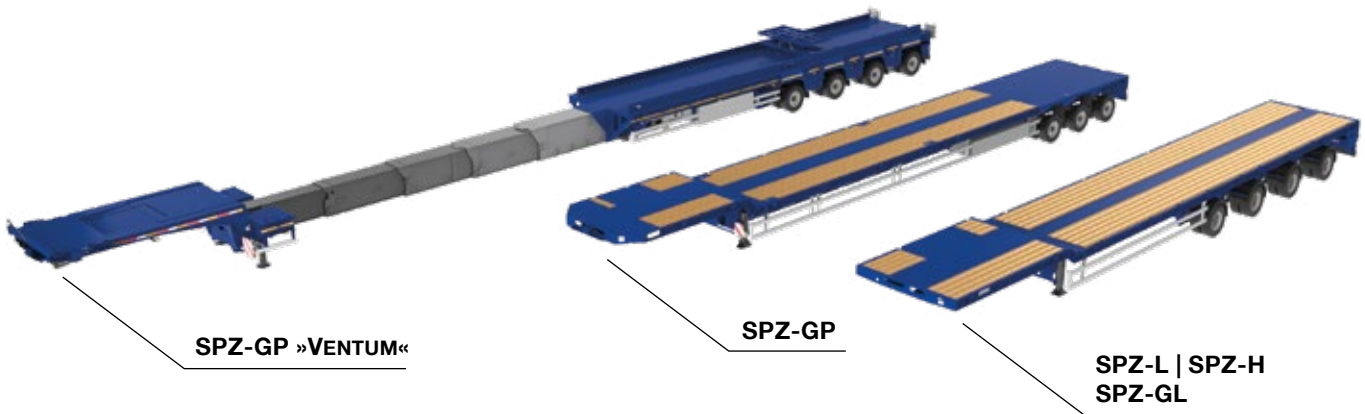
## SPZ-FAMILY TECHNICAL DATA



### TECHNICAL DATA

	SPZ-L   SPZ-H SPZ-GL	SPZ-GP	SPZ-GP »VENTUM«
Axle load <i>(Depending on country-related regulations) (technical)</i>	10 t at 80 km/h 12 t at 80 km/h	12 t at 80 km/h 12 t at 80 km/h	12 t at 80 km/h 12 t at 80 km/h
Fifth wheel load	20-32 t	26 t	33,5 t
Loading height	1,280-1,680 mm	1,180 mm	1,240 mm
Axle compensation	200 mm/270 mm 300 mm	600 mm	600 mm
Tires	245/70 R 17,5 <sup>[1]</sup>	245/70 R 17,5	245/70 R 17,5
Vehicle width	2,480 mm/2,550 mm	2,550 mm	2,750 mm
Swing clearance radius	2,400 mm/2,800 mm	2,400 mm/2,800 mm	3,400 mm
Extendability	Single to triple telescopic	3-times extendable	5-times extendable
Number of axles	2-7	3	3-4

<sup>[1]</sup> Optional tires:  
295/60 R 22,5 | 385/65 R 22,5 | 425/65 R 22,5



#### GOLDHOFER AKTIENGESELLSCHAFT

Donaustrasse 95, 87700 Memmingen/Germany  
Telephone: +49 8331 15-0, Fax: +49 8331 15-239  
Web: [www.goldhofer.com](http://www.goldhofer.com), E-Mail: [info@goldhofer.com](mailto:info@goldhofer.com)

#### GOLDHOFER INC. | FLITELINE, LLC

7401 Riviera Boulevard, Miramar, FL 33023, USA  
Telephone: +1 954 433 5617, Fax: +1 954 433 5445  
Web: [www.goldhofer.com](http://www.goldhofer.com), E-Mail: [info@goldhofer.com](mailto:info@goldhofer.com)  
Web: [www.flitelineusa.com](http://www.flitelineusa.com), E-Mail: [info@flitelineusa.com](mailto:info@flitelineusa.com)

#### SALES

Telephone Sales Europe: +49 8331 15-341  
Telephone Sales International: +49 8331 15-342  
E-Mail: [sales-transporttechnology@goldhofer.com](mailto:sales-transporttechnology@goldhofer.com)

#### SERVICES AND SPARE PARTS

Telephone: +49 8331 15-400, Fax: +49 8331 15-247  
Emergency Hotline: +49 172 837 61 65  
E-Mail: [service-transporttechnology@goldhofer.com](mailto:service-transporttechnology@goldhofer.com)

**MADE FOR YOUR MISSION**